



## Contents

### Winches - Hand

EDC Coated . . . . .825

Stainless Winches . . . . .825

### Atlantic® Winches

Tinny & Marine Winches . . . . .826

Marine Winches . . . . .827 - 828

Brake Winches . . . . .828

Large Brake Winches . . . . .829

### Winch Cables & Accessories

Galvanised Winch Cables . . . . .830

Winch Ropes & Winch Webbing . . . . .831

### Winches - Electric

Electric Winches . . . . .832 - 834

Electric Trailer Winches . . . . .835 - 840

Electric Trailer Winches - Remote. . . . .841 - 842

### Tie Downs

Ratchet Tie Downs. . . . .843 - 849

Transom Tie Downs . . . . .849

Cargo Straps. . . . .849

### Jockey Wheels

Jockey Wheels . . . . .850 - 851

Jockey Wheel Clamp . . . . .851

Jockey Wheel Handle . . . . .851

### Wheel Bearing Kits & Grease

Wheel Bearing Kits & Grease . . . . .852

### Trailer Accessories

Light Boards . . . . .852 - 853

Mounting Plates . . . . .853

Accessories . . . . .853

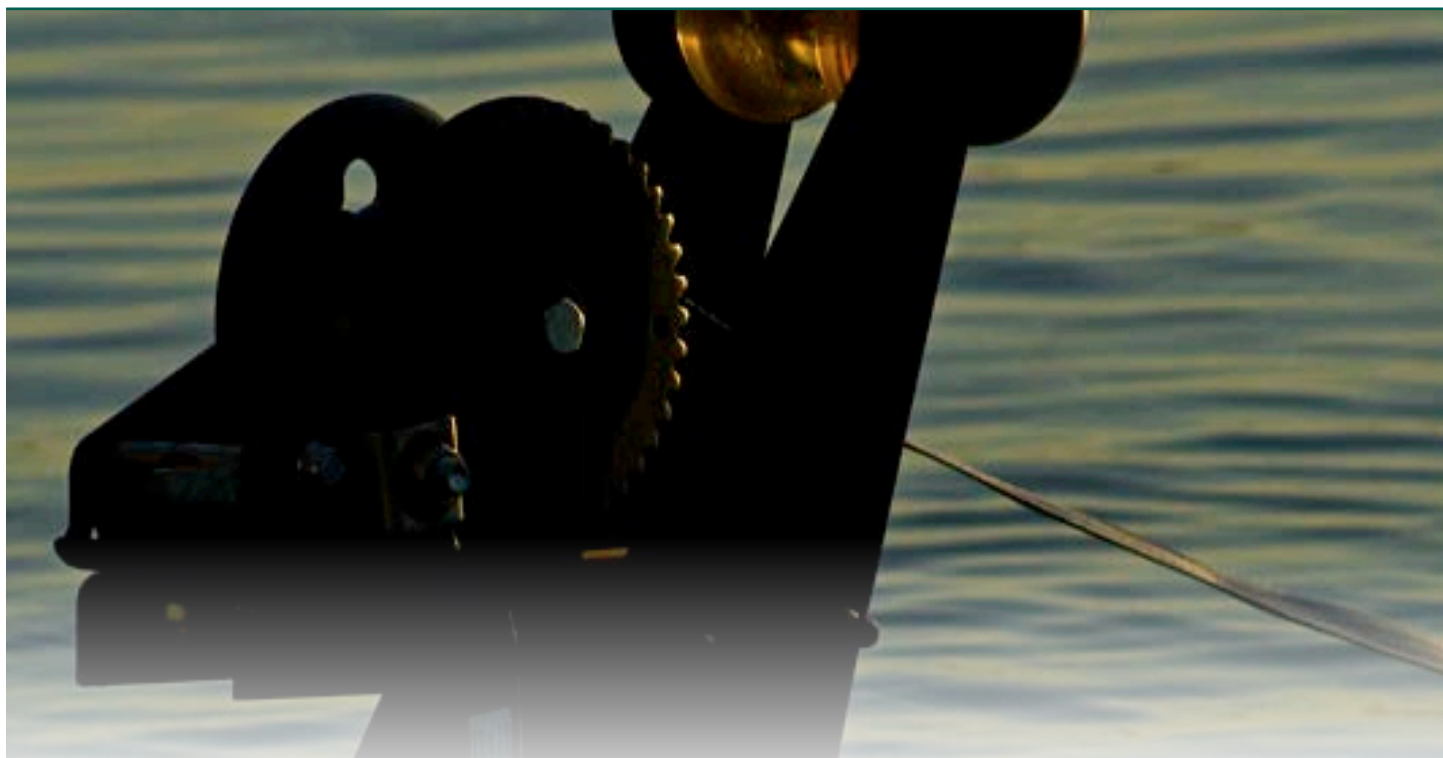
Security . . . . .854

### Trailer / Vehicle Plugs, Sockets & Adaptors

Trailer Sockets . . . . .855

Vehicle Plugs . . . . .855 - 856

Trailer Adaptors . . . . .856



### Marine & RV Winches, Ratchets & Tie Downs

All of our products are designed and built for a specific type of use.

**DO NOT** use these products for human suspension unless the product is specifically certified and labelled for such use.

### Winch - Hand Winch - Black EDC Coated



Part No.	Description	Ratio	Pull Capacity (kg)
54270	Compact Manual Winch	3:1	380
54271	Compact Manual Winch	4:1	450

- Solid gear construction.
- Black EDC coating to ensure longevity.
- Precise gear tooth engagement.
- Ratchet pawl.
- Suitable for wire, webbing or dyneema rope

*NOTE: Wire and hook not included.*

### Winch - Hand - Stainless Steel



Part No.	Description	Ratio	Two Way Pull	Pull Capacity (kg)
54278	Stainless Steel Compact Manual Winch	4.1:1	Yes	545

- 304 grade stainless steel.
- One piece solid gear construction.
- Gear cover protects outside interface while gearing.
- Smooth turning 'comfort grip' handle.
- Suitable for wire, webbing or dyneema rope.
- Include ratchet pawl.

*NOTE: Wire and hook not included.*








## Atlantic® Tinny Winch Series

Suitable for pulling either a small Tinny or large Jet Ski. The Atlantic® range of Tinny Winches are available as 3:1 ratio - with load capacity ratings operating at 300kg and come with a range of options including cable webbing strap, Atlantic Rope™ or no cable.



### Winch - Hand - 3:1 - Mini

Part No.	Application	Gear Ratio	Pull Capacity (kg)	Cable Type	Hook Type	Drum Hub (mm)	Flange Diameter (mm)	Drum Width I.D. (mm)	Max Cable/Rope Capacity
 542705	Boat Trailer	3:1	300	6m x 4mm Cable	'S' Hook	30	92	50	16m x 4mm
 542715	Boat Trailer	3:1	300	No Cable	No Hook	30	92	50	16m x 4mm
 542704	Boat Trailer	3:1	300	4.5m Webbing	'S' Hook	30	92	50	16m x 4mm

- Fixed handle.
- Suitable for pulling either a small tinny or large Jet Ski on to the trailer.
- Compact design Dacromet™ finish.
- NATA tested.
- Ratchet pawl.



542705

542704





542715

## Atlantic® Marine Winch Series

Suitable for retrieving boats up to 20 feet in length, the Atlantic® range of Marine Winches are available in five different ratios - 3:1, 5:1, 5:1/1:1, 10:1/5:1/1:1 or 15:1/5:1/1:1 - and with load capacity ratings operating from 500kg to 1500kg. Depending on the marine application, there's a number of options available including cable, webbing strap, Atlantic Rope™ or no cable.



### Winch - Hand - 3:1

Part No.	Application	Gear Ratio	Pull Capacity (kg)	Cable Type	Hook Type	Drum Hub (mm)	Flange Diameter (mm)	Drum Width I.D. (mm)	Max Cable/Rope Capacity
 542680	Boat Trailer	3:1	500	6m x 4mm Rope	'S' Hook	50	130	50	20m x 5mm
 542700	Boat Trailer	3:1	500	6m Webbing	'S' Hook	50	130	50	20m x 5mm
 542710	Boat Trailer	3:1	500	6m x 4mm Cable	'S' Hook	50	130	50	20m x 5mm
 542720	Boat Trailer	3:1	500	No Cable	No Hook	50	130	50	20m x 5mm

- Fixed Handle.
- Compact design.
- NATA tested.
- Dacromet™ finish.
- NATA tested.
- Ratchet pawl.



542680

542700

542720

542710

## Winch - Hand - 5:1

Part No.	Application	Gear Ratio	Pull Capacity (kg)	Cable Type	Hook Type	Ratchet Type	Drum Hub (mm)	Flange Diameter (mm)	Drum Width I.D. (mm)	Max Cable/Rope Capacity
542682	Boat Trailer	5:1	700	6m x 6mm Rope	Snap Hook	Pawl Lever	50	130	50	20m x 5mm
542701	Boat Trailer	5:1	700	6m Webbing	Snap Hook	Pawl Lever	50	130	50	20m x 5mm
542711	Boat Trailer	5:1	700	6m x 5mm Cable	Snap Hook	Pawl Lever	50	130	50	20m x 5mm
542721	Boat Trailer	5:1	700	No Cable	No Hook	Pawl Lever	50	130	50	20m x 5mm

- Fixed Handle.
- Compact design.
- NATA tested.
- Dacromet™ finish.
- Ratchet pawl.



## Winch - Hand - 5:1/1:1

Part No.	Application	Gear Ratio	Pull Capacity (kg)	Cable Type	Hook Type	Drum Hub (mm)	Flange Diameter (mm)	Drum Width I.D. (mm)	Max Cable/Rope Capacity
542702	Boat Trailer	5:1/1:1	700	7.5m Webbing	Snap Hook	50	130	50	20m x 5mm
542712	Boat Trailer	5:1/1:1	700	7.5m x 5mm Cable	Snap Hook	50	130	50	20m x 5mm
542722	Boat Trailer	5:1/1:1	700	No Cable	No Hook	50	130	50	20m x 5mm

- Interchangeable Handle.
- Compact design.
- NATA tested.
- Dacromet™ finish.
- Ratchet pawl.



## Winch - Hand - 10:1/5:1/1:1

Part No.	Application	Gear Ratio	Pull Capacity (kg)	Cable Type	Hook Type	Drum Hub (mm)	Flange Diameter (mm)	Drum Width I.D. (mm)	Max Cable/Rope Capacity
542686	Boat Trailer	10:1/5:1/1:1	1000	7.5m x 6mm Rope	Snap Hook	50	130	50	9.5m x 6mm
542703	Boat Trailer	10:1/5:1/1:1	1000	7.5m Webbing	Snap Hook	50	130	50	9.5m x 6mm
542713	Boat Trailer	10:1/5:1/1:1	1000	7.5m x 6mm Cable	Snap Hook	50	130	50	9.5m x 6mm
542723	Boat Trailer	10:1/5:1/1:1	1000	No Cable	No Hook	50	130	50	9.5m x 6mm




- Interchangeable Handle.
- Compact design.
- NATA tested.
- Dacromet™ finish.
- Ratchet pawl.





## Atlantic® Marine Winches & Brake Winches

### Winch - Hand - 15:1/5:1/1:1

Part No.	Application	Gear Ratio	Pull Capacity (kg)	Cable Type	Hook Type	Drum Hub (mm)	Flange Diameter (mm)	Drum Width I.D. (mm)	Max Cable/Rope Capacity
 542688	Boat Trailer	15:1/5:1/1:1	1500	7.5m x 7mm Rope	Snap Hook	50	130	50	10m x 7mm
 542714	Boat Trailer	15:1/5:1/1:1	1500	7.5m x 7mm Cable	Snap Hook	50	130	50	10m x 7mm
 542724	Boat Trailer	15:1/5:1/1:1	1500	No Cable	No Hook	50	130	50	10m x 7mm

- Interchangeable Handle.
- Compact design.
- NATA tested.
- Dacromet™ finish.
- Ratchet pawl.



542714

542724

542688




### Atlantic® Brake Winches

#### Atlantic® Brake Winch Series

The Atlantic® range of Brake Winches are available in 3 different ratio sizes – 3:1, 5:1 and 10:1 with load capacity ratings operating from 200kg to 500kg. The range offers the option of cable, Atlantic Rope™ or no cable and are suitable for pulling or lifting. The self actuating automatic braking mechanism ensures the suspension of loads and jerk-free movement when lowering a load under pressure. The carbon copper fibre brake pads also ensure that a load is always secured under braking load.



### Winch - Hand - Brake - 5:1

Part No.	Application	Gear Ratio	Direct Lift Capacity (kg)	Cable Type	Hook Type	Drum Hub (mm)	Flange Diameter (mm)	Drum Width I.D. (mm)	Max Cable/Rope Capacity
 542696	Lifting	5:1	300	7.5m x 5mm Rope	Snap Hook	50	130	50	20m x 5mm
 542730	Lifting	5:1	300	7.5m x 5mm Cable	Snap Hook	50	130	50	20m x 5mm
 542732	Lifting	5:1	300	No Cable	No Hook	50	130	50	20m x 5mm

- The self actuating automatic braking mechanism ensures the suspension of loads and 'jerk-free' movement when lowering a load under pressure.
- Fixed Handle.
- Compact design.
- NATA tested.
- Dacromet™ finish.






542730

542732

542696

### Winch - Hand - Brake - 10:1

Part No.	Application	Gear Ratio	Direct Lift Capacity (kg)	Cable Type	Hook Type	Drum Hub (mm)	Flange Diameter (mm)	Drum Width I.D. (mm)	Max Cable/Rope Capacity
 542698	Lifting	10:1	500	7.5m x 6mm Rope	Snap Hook	50	130	50	9.5m x 6mm
 542731	Lifting	10:1	500	7.5m x 6mm Cable	Snap Hook	50	130	50	9.5m x 6mm
 542733	Lifting	10:1	500	No Cable	No Hook	50	130	50	9.5m x 6mm

- The self actuating automatic braking mechanism ensures the suspension of loads and 'jerk-free' movement when lowering a load under pressure.
- Fixed Handle.
- Compact design.
- NATA tested.
- Dacromet™ finish.



542698

542731

542733



## Atlantic® Large Brake Winch Series

The Atlantic range of Large Brake Winches are available in 2 different ratio sizes – 8:1 and 15:1 with load capacity ratings operating from 750kg to 1500kg. The self actuating automatic braking mechanism ensures the suspension of loads and 'jerk-free' movement when lowering a load under pressure. The carbon copper fibre brake pads also ensure that a load is always secured under braking load.



### Winch - Hand - Brake - 8:1

Part No.	Application	Gear Ratio	Direct Lift Capacity (kg)	Cable Type	Hook Type	Drum Hub (mm)	Flange Diameter (mm)	Drum Width I.D. (mm)	Max Cable/Rope Capacity
542740	Lifting	8:1	750	No Cable	No Hook	100	130	134	15m x 10mm



- The self actuating automatic braking mechanism ensures the suspension of loads and 'jerk-free' movement when lowering a load under pressure.
- Fixed Handle.
- Compact design.
- NATA tested.
- Dacromet™ finish.

### Winch - Hand - Brake - 15:1

Part No.	Application	Gear Ratio	Direct Lift Capacity (kg)	Cable Type	Hook Type	Drum Hub (mm)	Flange Diameter (mm)	Drum Width I.D. (mm)	Max Cable/Rope Capacity
542742	Lifting	15:1	1500	No Cable	No Hook	100	130	134	15m x 10mm



- The self actuating automatic braking mechanism ensures the suspension of loads and 'jerk-free' movement when lowering a load under pressure.
- Fixed Handle.
- Compact design.
- NATA tested.
- Dacromet™ finish.

### Winch - Spare Handles



542774

BR51G

54240

Part No.	Description
54240	3/8" Hex Winch Removable Handle 230mm
542774	Replacement Atlantic Winch Handle
BR51G	After Market Replacement Handle suits Powerwinch Trailer Winches.





## Winch Cables & Accessories

### Galvanised Winch Cables

#### Winch Wire - 'S' Hook

Part No.	Cable Dia. (mm)	Cable Strand	Cable Length (m)	'S' Hook Diameter (mm)
54100	4	6 x 19	4.5	8
54102	4	6 x 19	6.1	8
54109	4	6 x 19	7.6	8
54104	4	6 x 19	9.1	8
54108	5	6 x 19	6.1	8
54110	5	6 x 19	7.6	8
54117	5	6 x 19	9.1	8

- Galvanised wire.
- Stainless steel thimble.
- Stainless steel 'S' hook.



#### Winch Wire - Snap Hook

Part No.	Cable Dia. (mm)	Cable Strand	Cable Length (m)
54150	4	6 x 19	4.5
54152	4	6 x 19	6.1
54154	4	6 x 19	9.1
54158	5	6 x 19	6.1
54160	5	6 x 19	7.6
54167	5	6 x 19	9.1

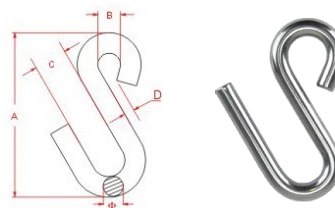
- Galvanised wire.
- Stainless steel thimble.
- Galvanised snap hook.



#### Stainless Steel 'S' Hook

Part No.	Ø (mm)	A (mm)	B (mm)	C (mm)	D (mm)	Diameter (mm)	TDL (kg)
56203	0.8	77	16	17	5.	8	400

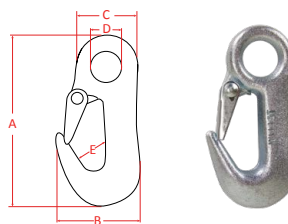
- 304G stainless steel.



#### Galvanised Snap Hook

Part No.	A (mm)	B (mm)	C (mm)	D (mm)	E (mm)	BL (kg)
52611	92.5	45.0	34.3	17.8	13.3	1500

- Galvanised.



## Winch Ropes & Winch Webbing

### Winch Webbing with Hook



Part No.	Width (mm)	Length (m)	SWL (kg)	Hook Type
54120	50	4.3	350	8mm 'S' Hook
54122	50	6.0	550	Snap Hook
54124	50	7.0	1000	Snap Hook

- Use for pulling loads only, not to be used for lifting.
- **54124** - Heavy Duty.
- Australian/New Zealand Standard **AS/NZS 4380:2001**.
- Winch replacement strap.
- Australian made quality.

*NOTE: Sold singularly. Colours subject to change without notice.*

### Winch Ropes - High Tech Dyneema

**High Performance**



Part No.	Dia. Ø (mm)	Length (m)	SWL (kg)	Hook Type	Suits Boat Length (m)
54168	4	4.5	205	8mm 'S' Hook	Up to 4.0
54170	4	4.5	205	Snap Hook	Up to 4.0
54172	5	6.0	340	8mm 'S' Hook	5.0 - 5.5
54174	5	6.0	340	Snap Hook	5.0 - 5.5
54175	5	15.0	340	Snap Hook	5.0 - 5.5
54180	7	7.6	700	Snap Hook	6.0 - 7.0
54182	7	15.0	700	Snap Hook	7.5 - 9.0


- Made from high strength and low stretch dyneema.
- Will not kink or curl like wire rope.
- No build up like polyester webbing.
- Attach by tying/looping tail end through fastening eyes on winch drum.

*NOTE: Rope colour may vary.*





### Electric Winch - Boat Trailer - 2000Lb (907kg)


Part No.	Volts (V)	Rated Line Pull	Remote	Weight (kg)	Gear Train	Overall Dimensions (mm)	Motor (HP)	Drum Speed (m/min)	Synthetic Rope Ø x Length	Drum Size Dia. Ø x Length (mm)
 542820	12	2000Lb (907kg) Single-Line	Hard Wired	11	Gear Gearshift	238 x 251.5 x 200	0.4	1.8	4.8mm x 9.2m	25 x 82

**NEW ENTRY**

- Suitable for intermittent use only, ideal for the retrieval of small trailer boats to 14'.
- Supplied with a hand-held remote for power-in only operation, quick release bracket for easy attachment and removal to either the tow ball or winch post.
- Adjustable free-spooling clutch, galvanised cable and snap hook, emergency crank handle and thermal safety overload.
- Supplied with mounting hardware and plug in switch with 3 metre lead.



### Electric Winch - Boat Trailer - 3500Lb (1588kg)

Part No.	Volts	Rated Line Pull	Remote	Weight (kg)	Gear Train	Overall Dimensions (mm)	Motor (HP)	Drum Speed (m/min)	Synthetic Rope Ø x Length	Drum Size Dia. Ø x Length (mm)
 542822	12V	3500Lb (1588kg) Single-Line	Hard Wired	11	Gear Gearshift	256 x 267 x 217	0.54	1.2	4.8mm x 9.2m	25 x 82

**NEW ENTRY**

- Suitable for intermittent use only, ideal for the retrieval of small trailer boats to 17'.
- Supplied with a hand-held remote for power-in only operation, quick release bracket for easy attachment and removal to either the tow ball or winch post.
- Adjustable free-spooling clutch, galvanised cable and snap hook, emergency crank handle and thermal safety overload.
- Supplied with mounting hardware and plug in switch with 3 metre lead.



## Electric Winches

### Electric Winches - 2500Lb (1134kg)

Part No.	Volts (V)	Rated Line Pull	Remote	Weight (kg)	Gear Train	Overall Dimensions (mm)	Motor (HP)	Gear Reduction Ratio	Cable Ø x Length	Drum Size Dia. Ø x Length (mm)
542830	12	2500Lb (1134kg) Single-Line	Wireless Remote	7	Differential Planetary	295 x 105 x 105	1.2	153:1	4.8mm x 12m	31 x 72
542832	24	2500Lb (1134kg) Single-Line	Wireless Remote	7	Differential Planetary	295 x 105 x 105	1.2	153:1	4.8mm x 12m	31 x 72

- Suitable for a variety of applications but most commonly used on the front of ATV's (quad bikes).
- Differential planetary gear.
- Turn clutch.
- Four-way roller fairlead.
- Supplied with mounting hardware and plug in switch with 3 metre lead.



### Electric Winch - 4500Lb (2041kg)

Part No.	Volts (V)	Rated Line Pull	Remote	Weight (kg)	Gear Train	Overall Dimensions (mm)	Motor (HP)	Gear Reduction Ratio	Synthetic Rope Ø x Length	Drum Size Dia. Ø x Length (mm)
542834	12	4500Lb (2041kg) Single-Line	Wireless Remote	11.5	3-Stage Planetary	350 x 114 x 117	2.0	185:1	6.5mm x 10m	60 x 112

- Suitable for a variety of applications but most commonly used on agricultural equipment.
- Three stage planetary gear train.
- Turn clutch.
- Aluminium fairlead.
- Supplied with mounting hardware and plug in switch with 3 metre lead.







### Electric Winch - 6000Lb (2722kg)

Part No.	Volts (V)	Rated Line Pull	Remote	Weight (kg)	Gear Train	Overall Dimensions (mm)	Motor (HP)	Gear Reduction Ratio	Synthetic Rope Ø x Length	Drum Size Dia. Ø x Length (mm)
542836	12	6000Lb (2722kg) Single-Line	Wireless Remote	24	3-Stage Planetary	430 x 160 x 216	3.0	160:1	7.2mm x 24m	64 x 134

**NEW ENTRY**

- Suitable for a variety of applications but most commonly used on agricultural equipment.
- Three stage planetary gear train.
- Sliding ring gear clutch.
- Aluminium fairlead.
- Supplied with mounting hardware and plug in switch with 3 meter lead.



### Electric Winch - 8000Lb (3628kg)

Part No.	Volts (V)	Rated Line Pull	Remote	Weight (kg)	Gear Train	Overall Dimensions (mm)	Motor (HP)	Gear Reduction Ratio	Synthetic Rope Ø x Length	Drum Size Dia. Ø x Length (mm)
542838	12	8000Lb (3629kg) Single-Line	Wireless Remote	28	3-Stage Planetary	530 x 160 x 216	5.5	202:1	8.3mm x 24m	64 x 224

- Suitable for a variety of applications but most commonly used on agricultural equipment.
- Three stage planetary gear train.
- Sliding ring gear clutch.
- Aluminium fairlead.
- Supplied with mounting hardware and plug in switch with 3 meter lead.



## Powerwinch® PW712A Trailer Winch

Part No.	Application	Max Boat Length	Max Boat Weight	Circuit Breaker (Amp)	Line Speed (ft/min)	Gear Ratio	Dimensions (mm)	Winch Weight (kg)	Winch Cable
PW712A	Trailer Winch	23' (7m)	7495Lb (3400kg)	60	14	225:1	254 x 254 x 203	15	7/32" x 50'



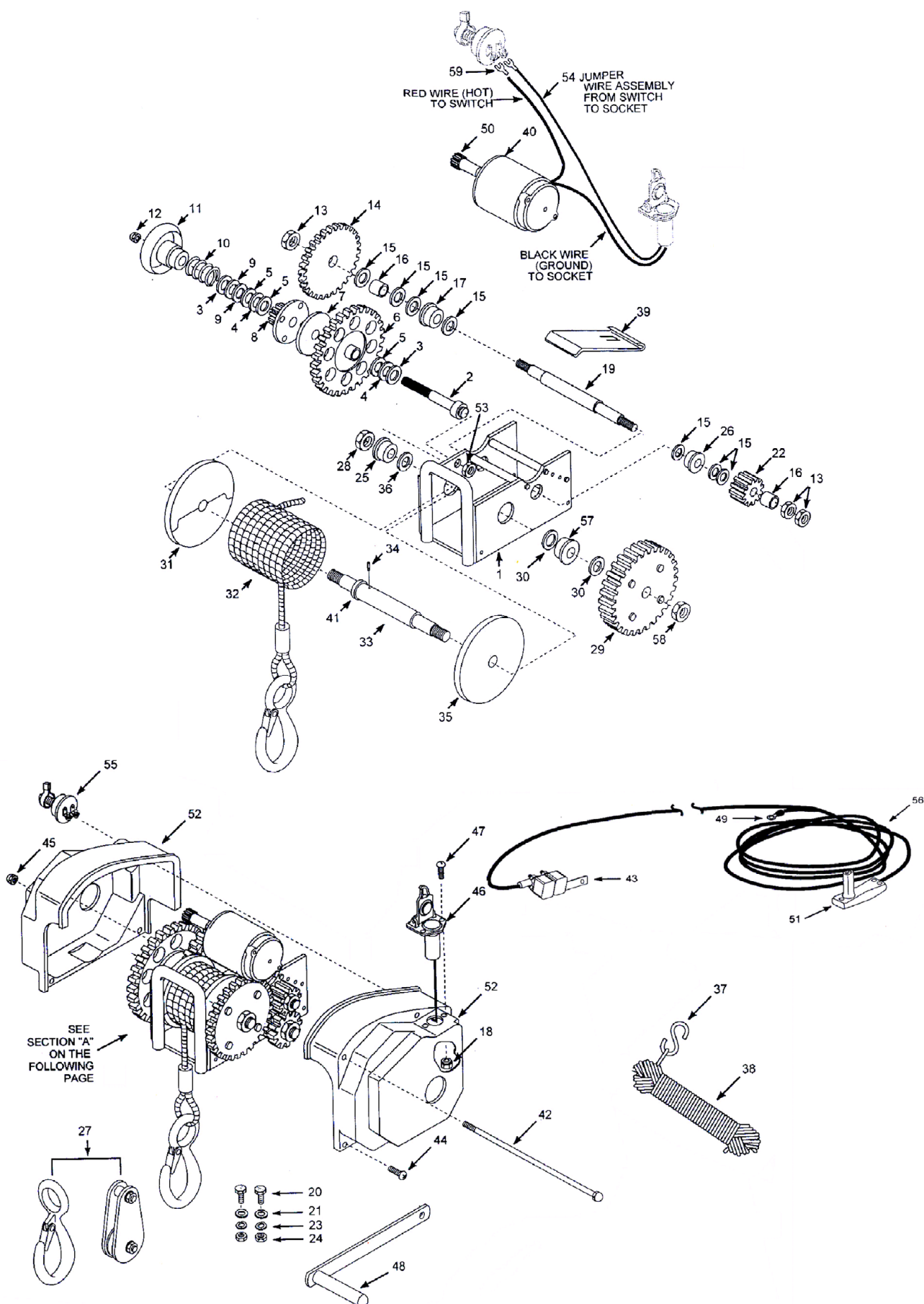
- The 712 is designed for medium sized boats up to 23' (7m).
- Suits boats up to 23'.
- A pulley or block at the bow eye can be used to double the pulling power however, retrieval speed is halved.
- Smooth power-in/freewheel out action for fastest launching and retrieval speeds.
- Powerwinches are made from the highest grade materials and designed for long wear.
- Adjustable clutch for controlled boat launching.
- Complete with colour coded 60 amp standard wiring harness for easy connection to the vehicle's battery.
- Easy to self-load with switch and convenient 25' lanyard cord.
- Includes manual handle.
- 2 Year Warranty.



## Powerwinch® PW712A - Spare Parts

Part No.	Key No.	Qty	Description	Part No.	Key No.	Qty	Description
71101	2	1	Clutch Stud	71820	36	3	Spacer
71612	3	2	Race Thrust	70213	39	1	Level wind Plate
71609	4	2	Bearing	72003	40	1	Motor Assembly
71613	5	3	Thrust Washer	75603	42	2	Cover Rod
71716	6	1	Gear Assembly	78373	43	1	Circuit Breaker
73602	7	1	Clutch Lining	79584	44	4	#10-32 x 1/2" Phillips Head Screw
71755	8	1	Gear Pinion Assembly	79719	45	4	Acorn Nut
79800	9	2	Spring Washer	78103	46	1	Socket
71902	10	1	Backlash Spring	71710	50	1	Motor Gear
79402	11	1	Clutch Knob	78105	51	1	Power Cable Plug
79738	13	3	1/2"-20 Locknut	74157	52	1	Cover Left & Right
71703	14	1	Rearshaft Gear suits PW315-PW915	71700	-	-	Sprag Bearing 1 Way for PW712A & PW912
71822	15	7	Washer	78117	55	1	Switch W/Hardware
71818	16	2	Rear Shaft Space	78302	56	1	Wiring Harness Assembly
71607	17	1	Bearing	71606	57	1	Double Row Bearing
79701	18	3	#10-32 Hex Nut	7160901	-	-	PW712 & PW912 Clutch Washer Repair Kit
71202	19	1	Rear Gear Shaft				
71704	22	1	Pinion Gear 12T				
79710	24	2	3/8"-16 Hex Nut				
71605	25	2	Bearing				
71608	26	1	Bearing				
79043	27	1	Pulley Block				
71795	29	1	Gear Assembly				
71878	32	1	Cable Assembly				
71404	33	1	Cable Shaft				
71858	34	1	Cable Fastener				

## Powerwinch® PW712A - Spare Parts





## Powerwinch® PW912 Trailer Winch

Part No.	Application	Max Boat Length	Max Boat Weight	Circuit Breaker (Amp)	Line Speed (ft/min)	Gear Ratio	Dimensions (mm)	Winch Weight (kg)	Winch Cable
PW912	Trailer Winch	30' (9m)	11500Lb (5215kg)	60	8	225:1	254 x 254 x 203	15.8	7/32" x 50'



- The 912 is designed for larger boats up to 30' (9m).
- Suits boat up to 30'.
- A pulley or block at the bow eye can be used to double the pulling power however, retrieval speed is halved.
- Smooth power-in/freewheel out action for fastest launching and retrieval speeds.
- Powerwinches are made from the highest grade materials and designed for long wear.
- Adjustable clutch for controlled boat launching.
- Complete with colour coded 60 amp standard wiring harness for easy connection to the vehicle's battery.
- Easy to self-load with switch and convenient 25' lanyard cord.
- Includes manual handle.
- 2 Year Warranty.



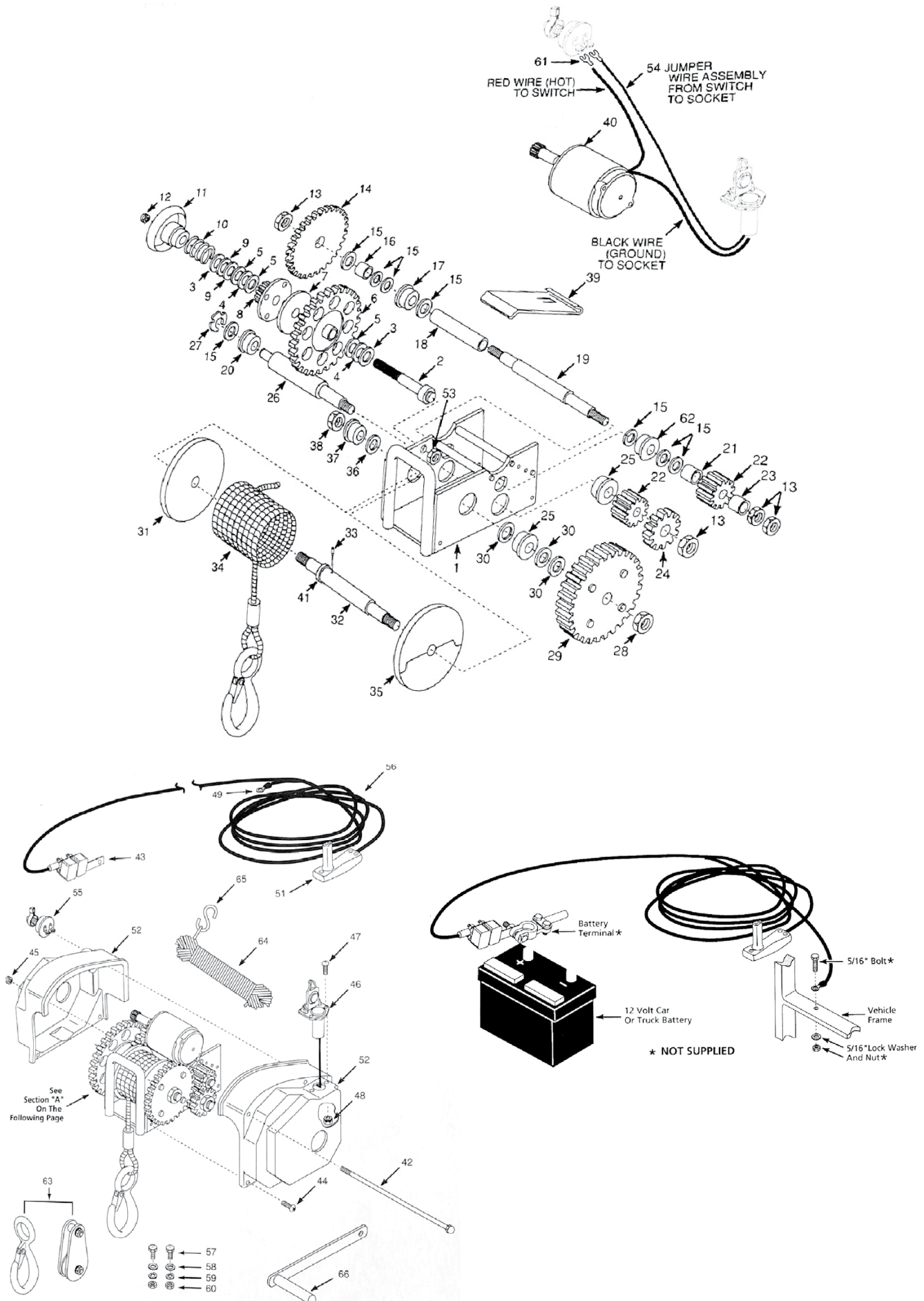
## Powerwinch® PW912 - Spare Parts

Part No.	Key No.	Qty	Description	Part No.	Key No.	Qty	Description
71101	2	1	Clutch Stud Assembly	71858	33	1	Cable Fastener
71612	3	2	Thrust Race	71854	34	1	7/32" x 40' Cable Assembly
71609	4	2	Thrust Bearing	71953	35	1	Cable Shaft Flange - Split
71613	5	3	Thrust Washer	71820	36	1	Spacer
71759	6	1	Compound Drive Gear Assembly	71605	37	1	Cable Shaft Bearing
73602	7	1	Clutch Lining	70212	39	1	Level wind Plate
71755	8	1	Pinion Clutch Gear Assembly	72002	40	1	Motor with Gear
79800	9	2	Spring Washer	75603	42	2	Cover Rod
71902	10	1	Backlash Spring	78373	43	1	Circuit Breaker 60 Amp
79402	11	1	Clutch Knob	79584	44	4	#10-32 x 1/2 Self Tapping PH Screw
79738 or 79712	13	4	1/2"-20 Locknut	79719	45	4	#6-32 Acorn Nut
71703	14	1	Drive Gear 57T	78103	46	1	Socket
71822	15	8	Washer	79701	48	2	#10-32 Hex Nut
71818	16	1	Rear Shaft Spacer Long	78105	51	1	Power Cable Plug
71607	17	1	Bearing	74157	52	1	Cover Left & Right
71819	18	1	Rear Shaft Spacer	78117	55	1	Switch W/Hardware
71201	19	1	Rear Gear Shaft	78302	56	1	Wiring Harness Assembly
71608	20	1	Rear Shaft Double Row Bearing	70913	58	2	3/8" Plain Washer
71817	21	1	Rear Gear Spacer	79710	60	2	3/8" - 16 Hex Nut
71704	22	2	Pinion Gear 12T	71608	62	1	Rear shaft bearing double row
71816	23	1	Rear Shaft Spacer, Short	79043	63	1	Pulley Block
71796	24	1	Idler Gear 24 Tooth	71700	-	-	Sprag Bearing 1 Way PW712A & PW912
71606	25	2	Bearing-dlb Row, Cable Shaft	7160901	-	-	PW712 & PW912 Clutch Washer Repair Kit
71301	26	1	Intermediate Shaft				
79715	28	1	Tri-Loc Nut				
71795	29	1	Cable Shaft Gear Assembly				
71821	30	3	Spacer Washer				
71951	31	1	Cable Shaft Flange - Solid				





## Powerwinch® PW912 - Spare Parts



## Powerwinch® PW915 Trailer Winch

Part No.	Application	Max Boat Length	Max Boat Weight	Circuit Breaker (Amp)	Line Speed (ft/min)	Gear Ratio	Dimensions (mm)	Winch Weight (kg)	Winch Cable
PW915	Trailer Winch	27' (8.2m)	9500Lb (4300kg)	60	10	225:1	254 x 254 x 203	18.1	7/32" x 40'

**Power In & Power Out**



- The 915 is designed for larger boats up to 27' (8.2m).
- Suits boats up to 27'.
- A pulley or block at the bow eye can be used to double the pulling power however, retrieval speed is halved.
- Smooth power-in/power out action for fastest launching and retrieval speeds.
- Remote control with 10' (3m) cord.
- Powerwinches are made from the highest grade materials and designed for long wear.
- Complete with colour coded 60 amp standard wiring harness for easy connection to the vehicle's battery.
- Easy to self-load with switch and convenient 25' lanyard cord.
- Includes manual handle.
- 2 Year Warranty.



Wired Remote Control for Convenient Power In & Power Out

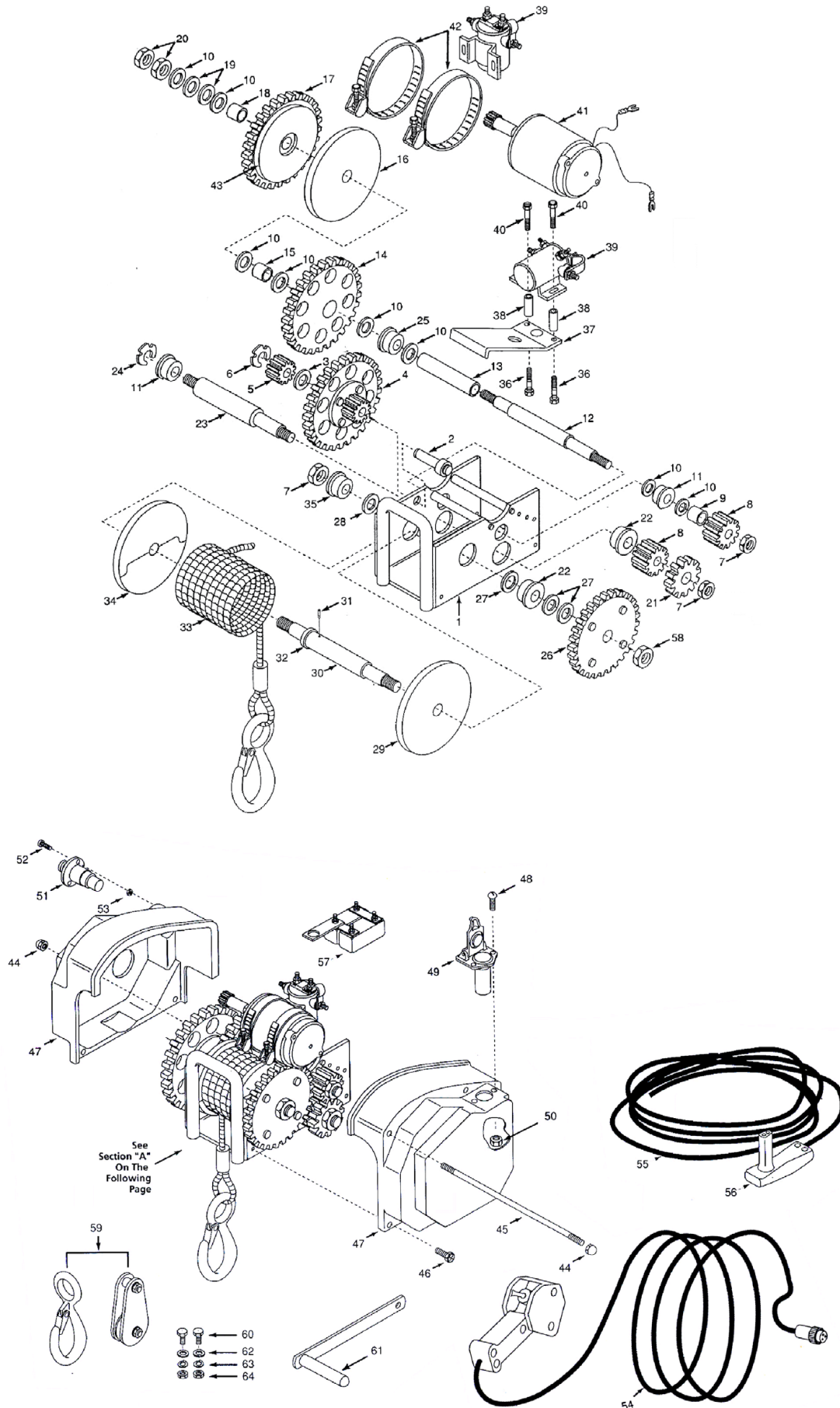


## Powerwinch® PW915 - Spare Parts

Part No.	Key No.	Qty	Description	Part No.	Key No.	Qty	Description
71613	3	1	Thrust Washer	71605	35	1	Bearing
71752	4	1	Gear Powered Assembly	70205	37	1	Level Wind Plate
71776	5	1	Pinion Brake Assembly	78188	39	2	Solenoid Power In/Out
70235	6	1	Retaining Ring Split	73604	43	1	Clutch Lining
79738	7	3	1/2"-20 Lock Nut	79719	44	4	#6-32 Acorn Nut
71704	8	2	Pinion Gear 12T	75603	45	2	Cover Rod
71817	9	1	Rear Shaft Spacer	79584	46	4	#10-32 x 1/2" Phillips head Screw
71822	10	12	Flat Washer	78103	49	1	Two-pole Socket
71608	11	2	Bearing	79701	50	2	#10-32 Hex Nut
71819	13	1	Rear Shaft Spacer	78408	54	1	Remote Control Assembly
71703	14	1	Drive Gear 57T	78302	55	1	Wiring Harness Assembly
71508	15	1	Spacer "D"	78105	56	1	Plug
75302	16	1	Clutch Plate	78373	57	1	Circuit Breaker Assembly
71757	17	1	Clutch Assembly w/lining	79716	58	1	3/4"-16 Tri-Lock Nut
71816	18	1	Rear Shaft Spacer	79043	59	1	Pulley Block Assembly
71904	19	2	Spring Washer	79710	64	2	3/8"-16 Hex Nut
71796	21	4	Idler Gear 24 Tooth	71951	29	1	Flange Drum
71606	22	2	Bearing	71312	30	1	Cable Shaft
71301	23	1	Shaft	71858	31	1	Cable Fastener
71607	25	1	Bearing				
71795	26	1	Gear Assembly				
71821	27	3	3/4" Spacer Washer				
71820	28	2	5/8" Spacer				
71854	33	1	Cable Assembly				
71953	34	1	Flange Drum - Split				



Powerwinch® PW915 - Spare Parts





## Electric Trailer Winches - Remote

### Powerwinch® Trailer Winches - Remote Controlled

Part No.	Application	Max Boat Length	Max Boat Weight	Circuit Breaker (Amp)	Line Speed (ft/min)	Gear Ratio	Dimensions (mm)	Winch Weight (kg)	Winch Cable	
PW230	Trailer Winch	23' (7m)	7500Lb (3400kg)	60	14	225:1	241 x 292 x 229	15.4	7/32" x 40'	
PW330	Trailer Winch	30' (9m)	11500Lb (5215kg)	60	8	225:1	241 x 292 x 229	16.3	7/32" x 40'	

**Wireless Remote**



- Wireless remote operated - power-in/freewheel-out operation.
- Built in light for night launch/retrieve.
- Emergency handle conveniently stored in winch cover.
- Super strong housing.
- Pulley block for double line applications.
- 60 Amp standard wiring harness.
- 2 Year Warranty.



Wireless Remote Control for Convenient Power In & Power Out



### Powerwinch® PW230 & PW330 - Internal Spare Parts

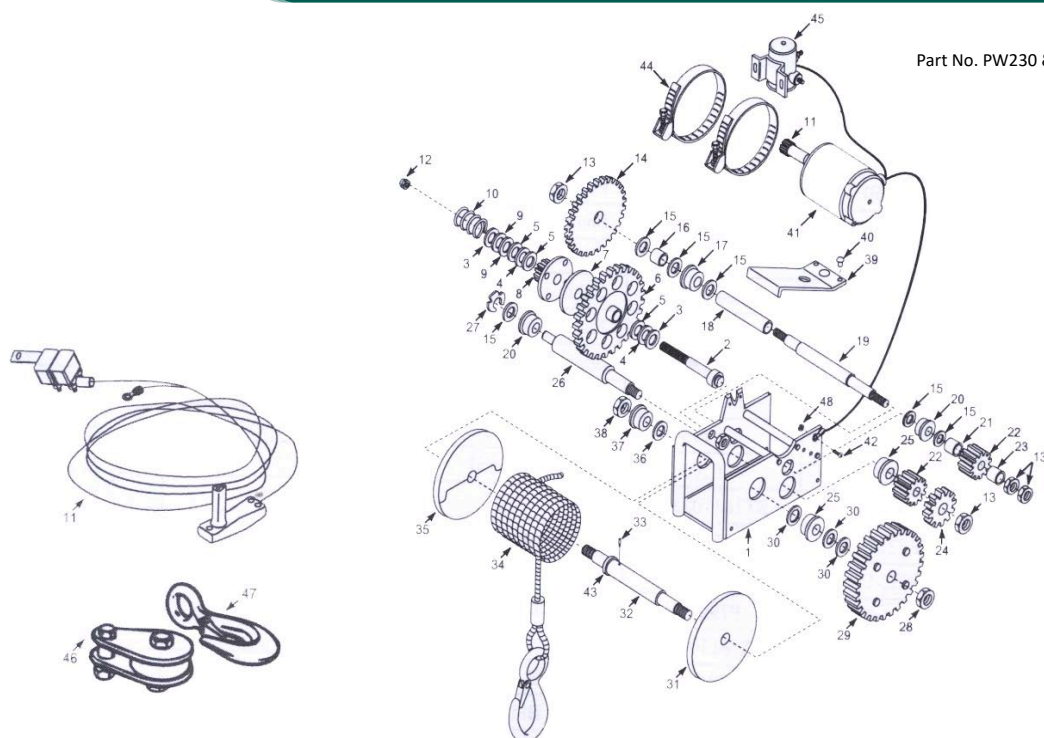
PW230			PW330			Description
Part No.	Key No.	QTY	Part No.	Key No.	QTY	
71101	2	1	71101	2	1	Stud, Clutch
71612	3	2	71612	3	2	Thrust, Race
71609	4	2	71609	4	2	Bearing
71613	5	3	71613	5	3	Washer, Thrust
71716	6	1	71759	6	1	Gear Powered Assembly
73602	7	1	73602	7	1	Lining, Clutch
71755	8	1	71755	8	1	Gear Pinion Assembly
79800	9	2	79800	9	2	Washer, Spring
78302	11	1	78302	11	1	Wiring Harness With Breaker
79738	13	5	79738	13	5	Nut, Tri-Loc Jam
71703	14	1	71703	14	1	Gear, Drive 57T
71822	15	6	71822	15	6	Washer
71818	16	1	71818	16	1	Spacer, Rear Shaft
71607	17	1	71607	17	1	Bearing
-	18	-	71819	18	1	Spacer, Rear Shaft
71202	19	1	71201	19	1	Shaft, Rear Gear
71608	20	1	71608	20	1	Bearing
-	21	-	71817	21	1	Spacer, Rear Shaft
71704	22	1	71704	22	2	Gear, Pinion 12T
71816	23	1	71816	23	1	Spacer, Rear Shaft
-	24	-	71796	24	1	Idler Gear 24 Tooth
-	25	-	71606	25	1	Bearing
-	26	-	71301	26	1	Shaft, Intermediate
55905	-	1 of each	55905	-	1 of each	Left & Right Covers suits PW230 / PW330
78103	5	1	78103	5	1	Power Socket
55904		1	55904		1	Remote, Suits Concealed Aerial 2007 & On
55903		1	55903		1	Remote, Suits Exposed Aerial Up To 2006





## Powerwinch® PW230 & PW330 - Internal Spare Parts

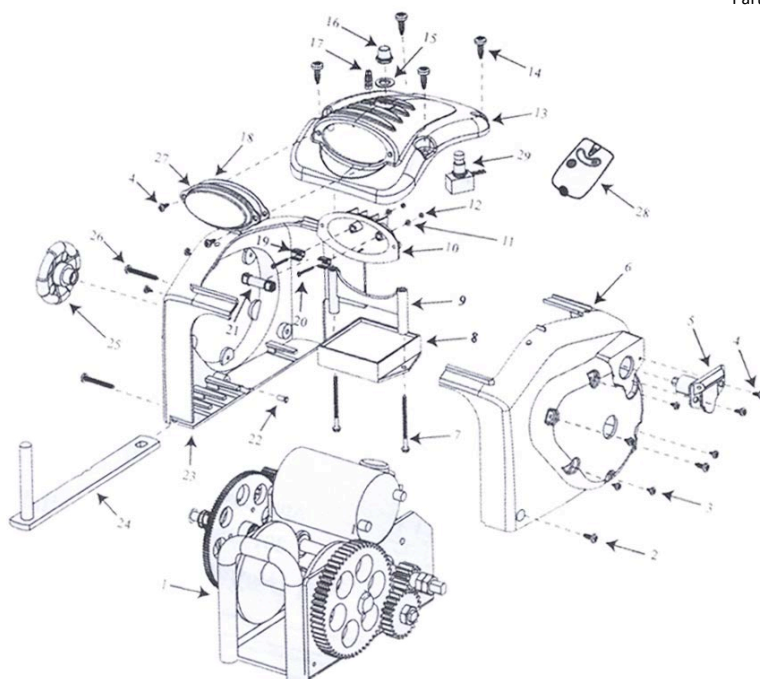
Part No. PW230 & PW330 Internal Parts



## Powerwinch® PW230 & PW330 - External Spare Parts

PW230			PW330			Description
Part No.	Key No.	QTY	Part No.	Key No.	QTY	
P55911	13	1	P55905	13	1	Cover, Top
P55932	15	1	P55932	15	1	Gasket Kit
P55929	16	1	P55929	16	1	Switch Boot
55932	18	1	55932	18	1	Gasket Kit
55924	22	1	55924	22	1	Ball Detent
55905	23	1	55905	23	1	Left/Right Hand Covers
P55909	27	1	P55909	27	1	Lens
P55930	29	1	P55930	29	1	Switch, Light
BR51G	24	1	BR51G	24	1	Manual Handle (Not Genuine)
79402	25	1	79402	25	1	Control Knob/Insert

Part No. PW230 & PW330 External Parts



## Tie Downs Ratchet Tie Downs



### Ratchet Tie Down - Endless - Stainless Steel

Part No.	Type	Ratchet Material	Strap Colour	Strap Width (mm)	Strap Length (m)	Lashing Capacity (kg)	Breaking Strength (kg)	Sold in
70493	Medium Duty	304G S/S	Grey	25	1.5	400	800	Pairs
<b>NEW ENTRY</b> 70493-BULK	Stainless Steel Endless Ratchet Tie Down - 10 Pack							
<b>NEW ENTRY</b> 70495	Medium Duty	304G S/S	Grey	25	5	400	800	Pairs



- Easy to use on roof racks.
- 304G stainless steel Ratchet.
- High quality thick webbing for lasting durability.
- Made to Australian/New Zealand standards.

**NOTE: Safety Warning - Must not be used for any lifting purposes. For load restraint use only.**

### Ratchet Tie Downs - 'S' Hook to 'S' Hook - Stainless Steel

Part No.	Type	Hook & Ratchet Material	Strap Colour	Strap Width (mm)	Strap Length (m)	Lashing Capacity (kg)	Breaking Strength (kg)	Sold in
70491	Medium Duty	304G S/S	Grey	25	5	400	800	Singles
<b>NEW ENTRY</b> 70491-BULK	Stainless Steel 'S' Hook to 'S' Hook Ratchet Tie Down - 10 Pack							
70492	Medium Duty	304G S/S	Grey	25	1.5	400	800	Pairs
<b>NEW ENTRY</b> 70492-BULK	Stainless Steel 'S' Hook to 'S' Hook Ratchet Tie Down - 10 Pack							



- 304G stainless steel Ratchet and 304G stainless steel 'S' hook to 'S' hook.
- High quality thick webbing for lasting durability.
- Ratchet positioned approximately 480mm from the hook end.
- Quick release ratchet.
- Made to Australian/New Zealand standards.

**NOTE: Safety Warning - Must not be used for any lifting purposes. For load restraint use only.**

### Ratchet Tie Downs - 'S' Hook to 'J' Hook - Stainless Steel

Part No.	Type	Hook & Ratchet Material	Hook & Ratchet Type	Strap Colour	Strap Width (mm)	Strap Length (m)	Lashing Capacity (kg)	Breaking Strength (kg)	Sold in
70537	Medium Duty	304G S/S	'S' Hook / 'J' Ratchet	Grey	25	1.5	350	700	Pairs



- Has 304G stainless steel Ratchet and 304G stainless steel 'S' hooks on strap end and 'J' ratchet end.
- 100% polyester webbing.
- Made to Australian/New Zealand standards.

**NOTE: Safety Warning - Must not be used for any lifting purposes. For load restraint use only.**

## Ratchet Tie Downs - 'S' Hook to 'S' Hook - Stainless Steel - Heavy-Duty

Part No.	Type	Hook & Ratchet Material	Strap Colour	Strap Width (mm)	Strap Length (m)	Lashing Capacity (kg)	Breaking Strength (kg)	Sold in
<b>70494</b>	Heavy Duty	304G S/S	Grey	50	8	350	700	Singles
<b>70494-BULK</b>	Stainless Steel 'S' Hook to 'S' Hook Ratchet Tie Down - 10 Pack							

NEW ENTRY

- 304G stainless steel Ratchet and 304G stainless steel 'S' hook to 'S' hook.
- High quality thick webbing for lasting durability.
- Ratchet positioned approximately 480mm from the hook end.
- Quick release ratchet with large hand lever.
- Made to Australian/New Zealand standards.

*NOTE: Safety Warning - Must not be used for any lifting purposes. For load restraint use only.*



## Over Lever Tie Downs - 'S' Hook to 'S' Hook

Part No.	Type	Buckle Type	Material	Strap Colour	Strap Width (mm)	Strap Length (m)	Lashing Capacity (kg)	Breaking Strength (kg)	Sold in
<b>70565</b>	Light Duty	Over Centre	Cadmium Plated Steel	Grey	25	1.5	150	300	Pairs
<b>70565-BULK</b>	'S' Hook to 'S' Hook Ratchet Tie Down - 10 Pack								
<b>70567</b>	Medium Duty	Over Lever	Cadmium Plated Steel	Grey	50	1.8	250	500	Pairs
<b>70567-BULK</b>	'S' Hook to 'S' Hook Ratchet Tie Down - 10 Pack								

NEW ENTRY

NEW ENTRY

- Cadmium plated steel over lever.
- High quality webbing.
- Buckle positioned approximately 250mm from the hook end.
- Quick release lever.
- Made to Australian/New Zealand standards.

*NOTE: Safety Warning - Must not be used for any lifting purposes. For load restraint use only.*



relaxn



## Tie Downs Ratchet Tie Downs



### Ratchet Buckle - Stainless Steel



Part No.	Type	Ratchet Material	Suits Strap Width (mm)	Breaking Strength (kg)	Sold in
70490	Medium Duty	304G S/S	25	800	Singles
70488	Heavy-Duty	304G S/S	50	3000	Singles

- Replacement stainless steel Ratchet buckle.
- Quick release ratchet buckle.



### Ratchet Buckle - 'J' Stainless Steel



Part No.	Type	Hooks & Ratchet Material	Hook & Ratchet Type	Suits Strap Width (mm)	Breaking Strength (kg)	Sold in
70539	Medium Duty	304G S/S	'J' Ratchet Only No Strap	25	900	Singles

- Replacement stainless steel Ratchet buckle with swivel 'J' hook.
- Suits 25mm webbing strap.





## Ratchet Tie Down - Stainless Steel


Part No.	Type	Ratchet Material	Hook Material	Strap Colour	Strap Width (mm)	Strap Length (m)	Lashing Capacity (kg)	Breaking Strength (kg)	Sold in
 <b>70530</b>	Light Duty	304G S/S	304G S/S	White	25	4.3	250	500	Singles
 <b>70530BLK</b>	Light Duty	304G S/S	304G S/S	Black	25	4.3	250	500	Singles

- Light duty good quality strap ideally suited for small tinnies and inflatable boats only.
- 304 Grade stainless steel Ratchet and 304 Grade stainless steel 'S' hooks both ends.
- Australian/New Zealand Standard **AS/NZS 4380:2001**.
- Australian made quality.

*NOTE: Safety Warning - Must not be used for any lifting purposes. For load restraint use only.*



## Ratchet Tie Down - Transom - Stainless Steel

Part No.	Type	Ratchet Material	Hook Material	Strap Colour	Strap Width (mm)	Strap Length (m)	Lashing Capacity (kg)	Breaking Strength (kg)	Sold in
 <b>70534</b>	Light Duty	304G S/S	304G S/S	Black	25	1.5	250	500	Pairs

- Light duty good quality strap ideally suited for use on transom.
- 304 Grade stainless steel Ratchet and 304 Grade stainless steel 'S' hooks both ends.
- Australian/New Zealand Standard **AS/NZS 4380:2001**.
- Australian made quality.

*NOTE: Safety Warning - Must not be used for any lifting purposes. For load restraint use only.*



## Ratchet Tie Down - Stainless Steel - Medium

Part No.	Type	Ratchet Material	Hook Material	Strap Colour	Strap Width (mm)	Strap Length (m)	Lashing Capacity (kg)	Breaking Strength (kg)	Sold in
 <b>70526</b>	Medium Duty	304G S/S	304G S/S	Blue	50	6	550	1100	Singles

- This is the premium strap.
- Has 304 Grade stainless steel Ratchet and 304 Grade stainless steel 'S' hooks both ends.
- Designed with the ratchet positioned approximately 1.5 metres from the hook end.
- It has thicker webbing for lasting quality.
- Australian/New Zealand Standard **AS/NZS 4380:2001**.
- Australian made quality.

*NOTE: Safety Warning - Must not be used for any lifting purposes. For load restraint use only.*



## Ratchet Tie Downs

### Ratchet Tie Down - 'S' Hook to 'J' Hook

Part No.	Type	Ratchet Material	Hook Material	Strap Colour	Strap Width (mm)	Strap Length (m)	Lashing Capacity (kg)	Breaking Strength (kg)	Sold in
70532	Medium Duty	304G S/S	304G S/S	White	50	5.5	550	1100	Singles



- 304 Grade stainless steel ratchet with unique swivel 'J' hook and stainless steel 'S' hook on strap end.
- Ideal for mid size boats.
- Australian/New Zealand Standard **AS/NZS 4380:2001**.
- Australian made quality.

**NOTE: Safety Warning - Must not be used for any lifting purposes. For load restraint use only.**

### Ratchet Tie Down - Tradesman - Epoxy Coated

Part No.	Type	Ratchet Material	Hook Material	Strap Colour	Strap Width (mm)	Strap Length (m)	Lashing Capacity (kg)	Breaking Strength (kg)	Sold in
70544	Light Duty	Epoxy Coated	Plastic Coated	Yellow	25	4	250	500	Singles



- Lightweight and versatile this ratchet is well suited to general light duty applications including marque tie down, bundling product and roof racks.
- Fitted with plastic coated 'S' hooks.

**NOTE: Safety Warning - Must not be used for any lifting purposes. For load restraint use only.**

### Ratchet Tie Down - Tradesman - Cadmium Plated

Part No.	Type	Ratchet Material	Hook Material	Strap Colour	Strap Width (mm)	Strap Length (m)	Lashing Capacity (kg)	Breaking Strength (kg)	Sold in
70507	Light Duty	Cadmium Plated Steel	Plastic Coated	Blue	25	4.3	250	1100	Singles
70509	Medium Duty	Cadmium Plated Steel	Plastic Coated	Blue	50	5.5	550	1100	Singles
70543	Medium Duty	Cadmium Plated Steel	Plastic Coated	Yellow	36	5.5	650	1300	Singles



- Ideally suited for mid size application.
- Medium size reliable ratchet makes this strap easy to use.
- Has large coated 'S' hook.
- Australian / New Zealand Standard **AS/NZS 4380:2001**.
- Australian made quality.

**NOTE: Safety Warning - Must not be used for any lifting purposes. For load restraint use only.**

### Ratchet Tie Down - Tradesman - Epoxy Coated

Part No.	Type	Ratchet Material	Hook Material	Strap Colour	Strap Width (mm)	Strap Length (m)	Lashing Capacity (kg)	Breaking Strength (kg)	Sold in
70542	Medium Duty	Epoxy Coated	Plastic Coated	Yellow	36	6	500	Max. 1000	Singles



- A medium duty 36mm epoxy painted ratchet assembly fitted with plastic coated 'S' hooks.
- Ideal for utes and light trucks.
- Features a wide handle for better grip and lock down safety.
- Fitted with plastic coated 'S' hooks.

**NOTE: Safety Warning - Must not be used for any lifting purposes. For load restraint use only.**





## Ratchet Tie Down - Wake Board Kit



Part No.	Ratchet Material	Hook Material	Strap Colour	Strap Width (mm)	Strap Length (m)	Lashing Capacity (kg)	Breaking Strength (kg)	Sold in
70556	304G S/S	304G S/S	Black	25	1.7 (Nose Strap) 4 (Main Strap)	250	Max. 500	Pairs

- Designed to restrain a wake board pole from the bow of the ski boat.
- Contains a 4m strap with a stainless steel Light Duty Ratchet and two stainless steel snap hooks.
- Nose strap also has two stainless steel snap hooks to connect onto bow hook.
- Includes wear sleeves for protection over the nose.
- Australian/New Zealand Standard **AS/NZS 4380:2001**.
- Australian made quality.

**NOTE: Safety Warning - Must not be used for any lifting purposes. For load restraint use only.**



## Tie Down - Gunwale - Over Centre



Part No.	Type	Buckle Material	Hook Material	Strap Colour	Strap Width (mm)	Strap Length (m)	Lashing Capacity (kg)	Breaking Strength (kg)	Sold in
70515	Light Duty	304G S/S	Plastic Coated	Grey	44	5.5	550	Max. 1100	Singles

- Gunwale is the term used for across the boat tie downs.
- These straps are specially made long for this application and are positioned towards the rear (stern) of the boat.
- Ease of operation with a lock down action.
- Designed with the buckle positioned mid way across the boat.
- Has plastic coated 'S' hooks both ends.
- Australian/New Zealand Standard **AS/NZS 4380:2001**.
- Australian made quality.

**NOTE: Safety Warning - Must not be used for any lifting purposes. For load restraint use only.**



## Tie Down - Cam Buckle



Part No.	Type	Buckle Material	Hook Material	Strap Colour	Strap Width (mm)	Strap Length (m)	Lashing Capacity (kg)	Breaking Strength (kg)	Sold in
70525	Light Duty	Plated Steel	Plastic Coated	Blue	25	2.6	150	Max. 300	Pairs

- Attach the floating hook to the centre tow point on the Jet Ski at rear.
- Connect the other two hooks to the trailer, hence a 'V' shape.
- Has coated S hooks both ends.
- Designed to use on jet skis.
- Australian/New Zealand Standard **AS/NZS 4380:2001**.
- Australian made quality.

**NOTE: Safety Warning - Must not be used for any lifting purposes. For load restraint use only.**



## Ratchet, Transom Tie Downs & Cargo Straps

### Tie Down - Cam Buckle

Part No.	Type	Buckle Material	Hook Material	Strap Colour	Strap Width (mm)	Strap Length (m)	Lashing Capacity (kg)	Breaking Strength (kg)	Sold in
70518	Medium Duty	Cast Aluminium	-	Blue	25	3.5	75	Max. 150	Pairs



- These medium weight roof rack straps are excellent for just about any use.
- Die cast aluminium.
- Versatile and easy to use.
- Made from Polyester webbing for superior durability.
- Longer length to loop around articles.
- Australian/New Zealand Standard **AS/NZS 4380:2001**.
- Australian made quality.

*NOTE: Safety Warning - Must not be used for any lifting purposes. For load restraint use only.*

### Ratchet Tie Down - Over Centre

Part No.	Type	Ratchet Material	Hook Material	Strap Colour	Strap Width (mm)	Strap Length (m)	Lashing Capacity (kg)	Breaking Strength (kg)	Sold in
70520	Medium Duty	Cadmium Plated Steel	Plastic Coated	Black	50	1.8	250	Max. 500	Pairs



- Medium duty cadmium plated steel 'over-lever' buckle with short length of webbing to plastic coated 'S' hook.
- Short length of webbing to plastic coated steel 'S' hook.
- Australian/New Zealand Standard **AS/NZS 4380:2001**.
- Australian made quality.

*NOTE: Safety Warning - Must not be used for any lifting purposes. For load restraint use only.*

### Tie Down - Side Release

Part No.	Type	Buckle Material	Hook Material	Strap Colour	Strap Width (mm)	Strap Length (m)	Lashing Capacity (kg)	Breaking Strength (kg)	Sold in
70517	Light Duty	Plastic	-	Black	25	2.5	50	Max. 100	Pairs



- Side release buckle.
- Use as a lightweight restraining strap for roof racks.
- General-purpose straps for any small articles.
- Ideal for surfboards, etc.
- Australian/New Zealand Standard **AS/NZS 4380:2001**.
- Australian made quality.

### Ocxy Straps - Stainless Steel Hooks



Part No.	Description	Length (mm)
NEW ENTRY 46118	Ocxy Strap/Bungee Cord with Stainless Steel Hooks	300
NEW ENTRY 46119	Ocxy Strap/Bungee Cord with Stainless Steel Hooks	400
NEW ENTRY 46120	Ocxy Strap/Bungee Cord with Stainless Steel Hooks	500
NEW ENTRY 46122	Ocxy Strap/Bungee Cord with Stainless Steel Hooks	600
NEW ENTRY 46124	Ocxy Strap/Bungee Cord with Stainless Steel Hooks	750
NEW ENTRY 46126	Ocxy Strap/Bungee Cord with Stainless Steel Hooks	1000

- Ideal for outdoor or marine use.
- Stainless steel hooks.
- Variety of colours.

### Cargo Straps



Part No.	Description	Length (mm)
70505	Black Rubber Cargo Strap	380
70508	Black Rubber Cargo Strap	550
70506	Black Rubber Cargo Strap	790

- Stretches over 70% of original length.
- Stainless steel 'S' hooks.



## Jockey Wheel - Standard

Part No.	Type	Bracket Type	Bolt / Weld	Clamp Type	Overall Length Retracted (mm)	Overall Length Extended (mm)	Load Capacity (kg)	Post Diameter (mm)	Wheel Diameter (in)
<b>54417</b>	Standard	2 Bolts	Fixed	Opening Clamp	570	800	350	50	6
<b>54414</b>	Standard	-	-	No Clamp	570	800	350	50	6
<b>54412</b>	Standard	2 Bolts	Swivel	Clamp	580	810	350	50	6
<b>54413</b>	Standard	2 U-Bolt	Swivel	Clamp	580	810	500	50	6

- Quality zinc finish.
- Replaceable winding handle.
- Max. 250mm height extension.
- Solid rubber wheel.
- Rated up to 350kg.
- Ideal for boat trailers, box trailers, horse trailers and lighter camper trailers.
- Supplied with pin locking swivel bracket for welding into position.
- **54413** Bracket suits 2", 3", 4", 5" and 6" U-bolts.

*NOTE: Mounting bolts not supplied.*



## Jockey Wheel

Part No.	Type	Bracket Type	Bolt / Weld	Clamp Type	Overall Length Retracted (mm)	Overall Length Extended (mm)	Load Capacity (kg)	Post Diameter (mm)	Wheel Diameter (in)
<b>54409</b>	Standard	-	Swivel	n/a	670	920	350	50	10
<b>54415</b>	Standard	2 Bolts	Fixed	Opening Clamp	670	900	350	50	10
<b>54411</b>	Standard	2 U-Bolts	Swivel	Clamp	670	920	350	50	10

- Quality zinc finish.
- Replaceable winding handle.
- Max. 250mm height extension.
- Solid rubber wheel with steel rim.
- Rated up to 350kg.
- Ideal for boat trailers, box trailers, horse trailers and lighter camper trailers.
- Supplied with pin locking swivel bracket for welding into position.
- **54411** Bracket suits 2", 3", 4", 5" and 6" U-bolts.

*NOTE: Mounting bolts not supplied.*



## Jockey Wheel - Heavy-Duty

Part No.	Type	Bracket Type	Bolt / Weld	Clamp Type	Overall Length Retracted (mm)	Overall Length Extended (mm)	Load Capacity (kg)	Post Diameter (mm)	Wheel Diameter (in)
<b>54408</b>	Heavy Duty	2 Bolts	Swivel	Clamp	650	900	500	50	8
<b>54410</b>	Heavy Duty	2 U-Bolt	Swivel	Clamp	650	900	500	50	8

- High 500kg load capacity.
- Max. 250mm height extension.
- Supplied with pin locking swivel bracket for welding into position.
- Solid rubber wheel with steel rim.
- Superior rust resistant dacromet finish.
- **54410** Bracket suits 2", 3", 4", 5" and 6" U-bolts.

*NOTE: Mounting bolts not supplied.*





## Jockey Wheels, Clamp & Handle

### Jockey Wheel - Pneumatic

Part No.	Type	Bracket Type	Bolt / Weld	Clamp Type	Overall Length Retracted (mm)	Overall Length Extended (mm)	Load Capacity (kg)	Post Diameter (mm)	Wheel Diameter (in)
54418	Pneumatic	2 U-Bolt	Swivel	Clamp	680	90	350	50	10



- Designed for those launching and manoeuvring on sand and other similar soft ground.
- Feature a large 10" inflatable heavy-tread rubber wheel to cope with difficult ground conditions.
- Max. 250mm height extension.
- Quality zinc finish.
- Supplied with pin locking swivel bracket for welding into position.
- Bracket suits 2", 3", 4", 5" and 6" U-bolts.

*NOTE: Mounting bolts not supplied.*

### Jockey Wheel - Ezimover

Part No.	Type	Bracket Type	Clamp Type	Overall Length Retracted (mm)	Overall Length Extended (mm)	Load Capacity (kg)	Post Diameter (mm)	Wheel Diameter (in)
54420	Heavy Duty	2 U-Bolt	Clamp	680	900	350	50	10



- Heavy duty solid rubber wheel.
- Capable of manoeuvring up to a 2 tonne caravan, horse float or trailer.
- On an even surface with minimum effort.
- Forward, reverse, neutral, stop/lock settings.
- Removable steering cranking handle.
- Max. 250mm height extension.
- Quality zinc finish.
- Supplied with pin locking swivel bracket for welding into position.
- Bracket suits 2", 3", 4", 5" and 6" U-bolts.

*NOTE: Mounting bolts not supplied.*

### Jockey Wheel Clamp



Part No.	Description	Min -Max (mm)	Mount Screws (mm)
54416	Jockey Wheel Clamp	40 - 50	13 r/h

- With 2 holes bolt-on or weld-on, suits 350kg jockey wheels.
- Zinc plated.

### Jockey Wheel Handle - Replacement



Part No.	Description	Length (mm)
54406	Replacement Jockey Wheel Handle	145

- Suits all standard jockey wheels, with flatted shaft and roll pin.



## Wheel Bearing Kits & Grease

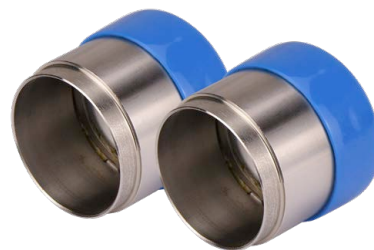
### Bearing Hub Protector

Part No.	Description	Suits Hub
<b>54190</b>	Bearing Hub Protector - Chrome Plated Metal	45mm (1.78")
<b>54194</b>	Bearing Hub Protector - Stainless Steel	45mm (1.78")

- Automatically lubricates bearings
- Prevents wheel bearing failure.
- Keeps water and dirt out of hubs and bearings.
- Chrome plated body.
- Stainless steel barrel and components provide maximum corrosion protection.
- PVC cap included.



Stainless steel components



### Wheel Bearing Kits - Marine

Part No.	Description	Suits
<b>54600</b>	Marine Wheel Bearing Kit	Ford
<b>54602</b>	Marine Wheel Bearing Kit	Holden

- Kit consists of small and large bearings, water proof seal and split pin.



## Trailer Accessories Light Boards

### Trailer Light Boards - LED

Part No.	Volts	Length (m)	Height (mm)	Sockets
<b>54535</b>	12	1.5	115	Quick Change Plugs
<b>54536</b>	12	1.8	115	Quick Change Plugs

- New interchangeable plug system with the three most popular plugs included.
- Supplied with 8 metres of cable moulded to a newly designed universal socket.
- Easy plug in/out attachment.
- Reduces floor stock inventory by 66%.
- 2 mounting points.
- A.D.R compliant.
- Includes 3 quick change plugs: 7 pin flat, 7 pin round and 5 pole large round.



7 Pin Flat



7 Pin Round



5 Pole Large Round



## Vehicle Mounting Plate - Socket



54626

54627

Part No.	Type	Material	Dimensions (mm)	Mount Screws (mm)
54626	Flat	Metal	72 x 65	5 r/h
54627	Right Angle	Metal	50 x 30 x 65	5 r/h

- Suitable for small round plastic and metal socket.

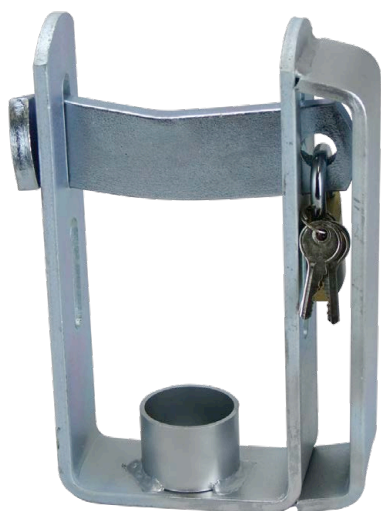
## Tow Ball - Chrome Plated



Part No.	Material	Length (mm)	Width (mm)	Thread Length (mm)	Bolt Ø (mm)	Tow Capacity (kg)
54610	Chrome Plated	125	50	52	22	3500
54609	Chrome Plated	125	50	62	22	3500

- Heavy duty chrome plated.
- Australian standards approved.

## Trailer Lock



Part No.	Description	Mounting Diameter (mm)
54612	Dual Slot Trailer Lock	28

- The strong 6mm thick galvanised steel with solid welds provides enormous strength which will deter even the most willing thieves.
- The solid steel locking bar is reversible to ensure a perfect fit on all trailer couplings.
- The dual slot enables locking of the trailer when connected to a tow vehicle or when free standing.

NOTE: Padlocks sold separately.





### Trailer Coupling

Part No.	Capacity (kg)	Ball Diameter (mm)	Mounting Diameter (mm)
54615	2000	50	14

- Features a lockable safety trigger and a tow ball anti rattle screw.
- Galvanised finish for protection.



### Rego Holder

Part No.	Description	Width (mm)	Height (mm)	Mounting Diameter (mm)
54650	Plastic Rego Holder	130	85	7

- Protects vehicle registration tickets from the elements.
- Made from high quality polypropylene and is not brittle like cheaper imports.
- It closes firmly to keep label dry.
- All Australian rego labels will fit.



### Wheel Locks - Stretchmaster

Part No.	Description	Dimensions (mm)
180284	Stretchmaster Wheel Locks	900 x 450

- The fastest way to ensure your motor vehicle, boat trailer, aircraft, caravan, box trailer & camper trailer stays secure.
- Insurance company approved.
- Fits up to 29cm wide wheels.
- Hardened steel.
- Attaches in seconds.
- Weighs under 3kg.
- Stops wheel from rotating.
- Highly visible.
- Immobilises almost anything with wheels.
- Push button lock.
- Complete with three high security keys.

NOTE: Integrated Lock.



Pulls apart for easy storage



Cap to cover the lock



3 security keys



Heavy-duty construction

### Vehicle Sockets - Round



Part No.	Pin	Type	Size	Type
54620	6	Round	Small	Standard
54622	7	Round	Small	Standard
54642	7	Round	Small	LED Indicator
54648	7	Round	Large	LED Indicator

- Brass terminals.
- New stylish design.
- Superior quality.
- Revolutionary 3 step wiring body.
- On/off switch incorporated.
- Fits all standard round 6 or 7 pin trailer plugs.
- **54642/54648** have in-built LED circuit tester with simple colour coded wiring.
- Meets performance requirement **AS4177.5 2004**.

### Vehicle Sockets - Flat



Part No.	Pin	Type	Type
54624	7	Flat	Standard
54644	7	Flat	LED Indicator

- Brass terminals.
- New stylish design.
- Superior quality.
- Revolutionary 3 step wiring body.
- Fits all standard 7 pin flat trailer plugs.
- **54644** has in-built LED circuit tester with simple colour coded wiring.
- Meets performance requirement **AS4177.5 2004**.

### Trailer Plugs - Round



Part No.	Pin	Type	Size	Type
54621	6	Round	Small	Standard
54623	7	Round	Small	Standard
54643	7	Round	Small	LED Indicator
54647	7	Round	Large	LED Indicator

- Brass terminals.
- New stylish design.
- Superior quality.
- Revolutionary 3 step wiring body.
- On/off switch incorporated.
- Fits all standard 6 and 7 pin vehicle sockets.
- **54643/54647** have in-built LED circuit tester with simple colour coded wiring.
- Meets performance requirement **AS4177.5 2004**.



## Trailer Plug - Flat

Part No.	Pin	Type	Type
54625	7	Flat	Standard
54645	7	Flat	LED Indicator

- Brass terminals.
- New stylish design.
- Superior quality.
- In-built LED circuit tester with simple colour coded wiring.
- Revolutionary 3 step wiring body.
- Fits all standard 7 pin flat vehicle sockets.
- **54645** have in-built LED circuit tester with simple colour coded wiring with an on/off switch incorporated.
- Meets performance requirement **AS4177.5 2004**.



54625



54645

## Trailer Plug Adaptors - Round to Round

Part No.	Vehicle End			Trailer End		
	Pin	Size	Type	Pin	Size	Type
54628	6	Small	Round	7	Small	Round
54629	7	Small	Round	6	Small	Round

- Brass terminals.
- Superior quality.
- Round vehicle to round trailer.



54628



54629



## Trailer Plug Adaptors - Round to Flat

Part No.	Vehicle End			Trailer End		
	Pin	Size	Type	Pin	Size	Type
54631	7	Small	Round	7	Small	Flat

- Brass terminals.
- Superior quality.
- Round vehicle to round trailer.



54631



## Trailer Plug Adaptors - Flat to Round

Part No.	Vehicle End		Trailer End		
	Pin	Type	Pin	Size	Type
54632	7	Flat	6	Small	Round
54633	7	Flat	7	Small	Round

- Brass terminals.
- Superior quality.
- Flat vehicle to round trailer.

