

relaxn® SOLAR SMART SENSOR LED STREET LIGHT

PART NO.: 709420

USER MANUAL



10W
Watts

1150
Lumens

IP65
Rating

120°
Detection
Angle

The smarter way of lighting

12
MONTHS
MANUFACTURE
WARRANTY



ROHS
COMPLIANT



Please read and follow all instructions to operate.
Save this manual for futures reference.

SPECIFICATIONS

LED Chip Type:	64 x SMD 2835
Recharge Time:	6 Hours of Sunlight
Overall Dimensions (mm):	313,9 x 211,3 x 37,4
Motion Detection Angle:	120°
Motion Detection Distance:	8Mtr
Beam Angle:	90°
Frame Colour:	Black
LED Colour:	Cool White
Working Temperature:	-20°C - 50°C
Housing Material:	ABS, PC & Aluminium
Solar Panel Output:	6Wp, 11V Mono-crystalline Silicone
LiFePO4 Battery (Replaceable):	7.4V / 3000mAh

FEATURES

- Lumen output of up to 1150lm.
- 360° rotatable bracket and 135° foldable light panel.
- 120° wide angle PIR sensor detects up to 8 meters away.
- Lasts up to 5 nights from a single 6 hour charge.
- Rated IP65 water and dust protection.
- Optical Lens optimises light.
- Made from high quality Anti-UV and Flame-Retardant material.
- Mounting brackets included - wall mount or post mount.

ACCESSORIES

- 1 x Solar Smart Sensor LED Flood Light
- User Manual
- Mounting Screws
- Mounting Template
- Allen Key Wrench
- U-Shaped Bracket

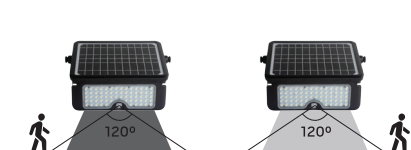
WORKING MODES



Button Control:

Press the button, the lamp will automatically turn on to Sensor Mode.
Press the button for 3 seconds the lamp will flash once and turn on Constant Lighting Mode.

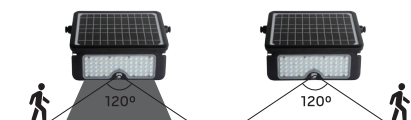
Mode A - Sensor Mode



Battery above 30%

Battery above 30%

Automatically turn on 100% full brightness when the sensor has detected motion in the 8 meter radius and then turns to lower brightness for 20 seconds after motion.



Battery below 30%

Battery below 30%

Automatically turn on 100% full brightness when the sensor has detected motion in the 8 meter radius and then turns off for 20 seconds after motion.

Mode B - Constant Lighting Mode



Press the button for 3 seconds the lamp will flash once and turn on Constant Lighting Mode. The lamp will remain on for 6-8 hours. After this time it will change to Sensor Mode until the battery goes flat.

NOTICE

1. The lamp button is a power-off switch, the lamp can get solar charged in any mode.
2. This is a solar powered lamp, please install it in a location where it can get enough sunshine.
3. Please note the lighting time depends on the sunshine duration & weather.
4. Built-in intelligent IC with over-charge, over-discharge and over-voltage protection.
5. The lamp gets solar charged in the daytime, and lights up automatically at dusk in Sensor Mode.
6. The lamp is equipped with an internal battery pack, which is replaceable. If required, please contact the seller for the correct new battery pack.
7. Non-professionals please do not disassemble the lamp.
8. Please do not dispose of the battery with household garbage to avoid explosion.

WARRANTY

Sam Allen Wholesale warrants this product against defects in manufacture and workmanship for a period of 1 year from the date of purchase. This warranty is only valid for products installed and operated within the guidelines specified by Sam Allen Wholesale, and within the correct operating voltage ranges as stated on the product's rating label.

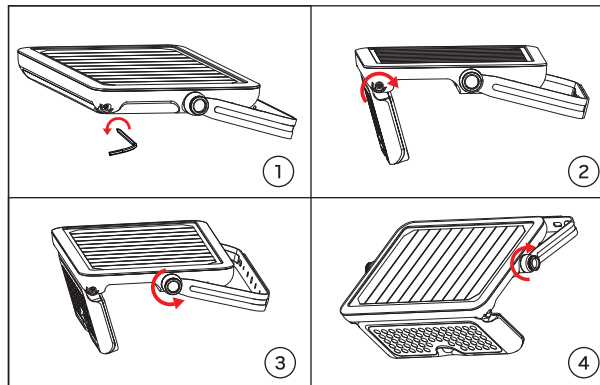
Warranty does not include damage or loss arising from incorrect installation, operation or maintenance of this product, damage caused through modification, service by unqualified or unauthorised personnel or lack of regular maintenance and cleaning. Proof of installation by qualified personnel may be required.

This warranty is provided in addition to any other rights and remedies of the customer under any law. In applications not intended for household, personal or domestic use, liability is limited to replacement or reimbursement of the product only. Sam Allen Wholesale does not warrant the costs of removal or re-installation of this product or associated components.

Our goods come with guarantees that cannot be excluded under the Australian Consumer Law. The consumer is entitled to a replacement or refund for a major failure and compensation for any other reasonably foreseeable loss or damage. You are also entitled to have the goods repaired or replaced if goods fail to be of acceptable quality and the failure does not amount to a major failure.

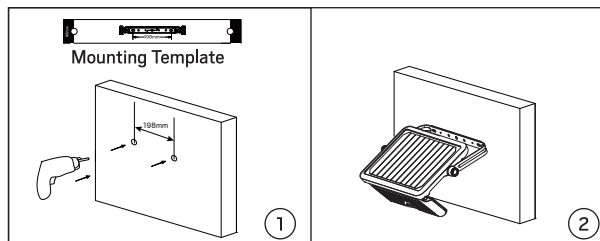
To make a claim under the warranty: Please return to the point of purchase, including reasonable proof of that purchase.

INSTALLATIONS



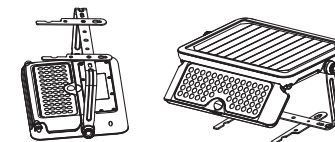
1. Use wrench to loosen the light panel and adjust it to the demanded lighting angle (pic 1).
2. Fix the screw tightly (pic 2).
3. Rotating the screw to loosen the bracket (pic 3).
4. Adjust the bracket to the appropriate angle and fix the screw tightly (pic 4).

Installation A: Wall Mount



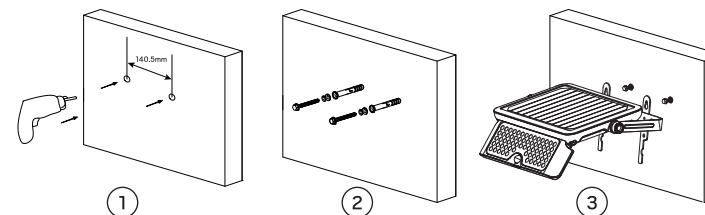
1. Use the mounting template to mark the holes position and drill 2 holes of Ø8mm with a hole distance of 198mm on the wall.
 2. Fix the lamp on the wall with expansion plugs and screws.
- * The recommended mounting height is 3-4mtrs.

Installation B: Horizontal Mount



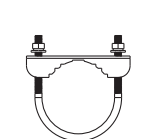
Push the stand bracket and put it on a flat surface.

Installation C: Hang on the Wall

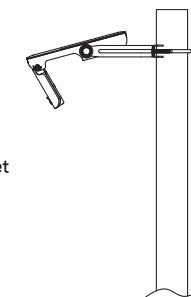


1. Drill 2 holes of Ø8mm with a hole distance of 140.5mm on the wall (pic 1).
 2. Fix the expansion plugs and screws in the holes, and allow the screws to protrude slightly around 4mm (pic 2).
 3. Push the stand bracket, align the hanging holes then hang the lamp on the wall (pic 3).
- * The recommended hanging height is less than 2mtrs.

Installation D: Lamp Pole Mount (Bracket included)



U-Shaped Bracket



Use U-shaped bracket insert to the lamp bracket across the straight pole. Tighten the screws to fix the lamp onto the pole.

Round lamp post Ø 40mm-60mm
Square lamp post 30mm-40mm