

# CARBON FIBER VINYL SWITCH PANEL WITH 20A STAINLESS STEEL PUSH BUTTON SWITCHES

## USER MANUAL

## INSTALLATION INSTRUCTIONS

### FEATURES

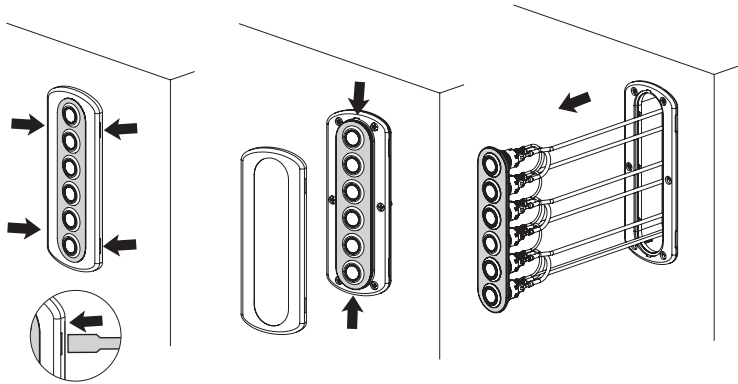
- Elegant Carbon Fiber Vinyl film with vivid 3D texture.
- Ultra Compact Panel Size / mounting holes compatible with BEP's Contour Panel Series.
- Screw hidden design with polished stainless steel bezel.
- 20A Anti-Vandal Stainless Steel Push Button Switches with backlight labels.
- 40 pcs assorted label stickers included.
- Rated IP66 – Protected against powerful water jets from all directions (when mounted).
- Water-tight gasket included.

1. Disconnect all power (DC).
2. Cut opening for mounting location using the template provided.
3. Connect the positive wire (red) to the DC power source (the batteries) and the LED negative feed wire (yellow) to a DC negative bus bar.
4. Connect the devices positive to the load terminals of the switches. Connect the negative wires of the devices to a negative bus bar. Apply desirable labels to the recessed area at corresponding branches.
5. Mount the switch panel with the included self-tapping screws.
6. Reconnect the DC power. Turn on and off all branch circuits to check if the panel works normally.

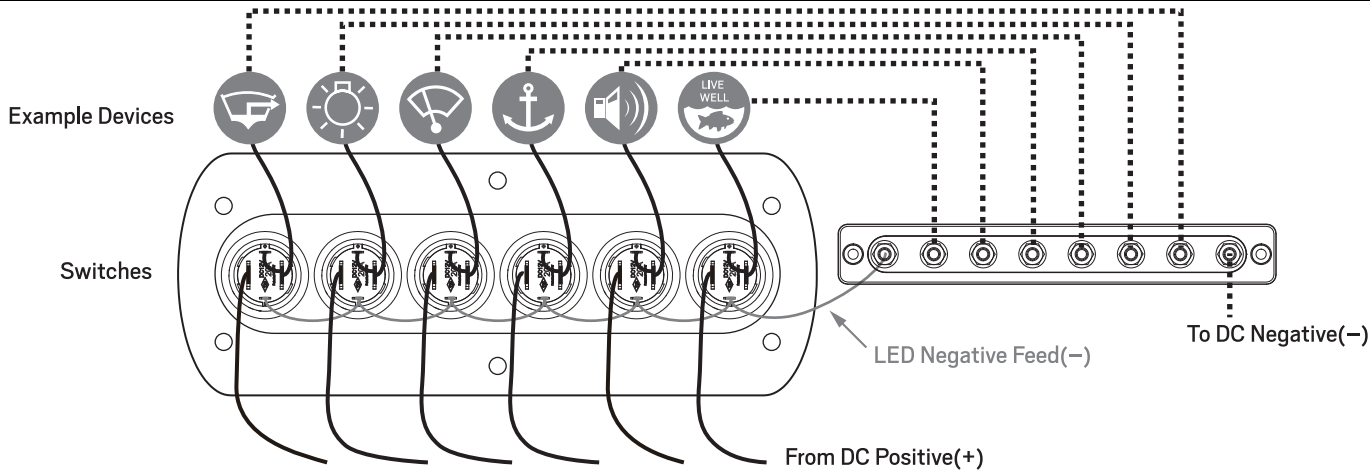
*Note: Connect the switch panel to a fuse board using suitable fuses for your application.*

### SPECIFICATIONS

Faceplate:	Plastic with Carbon Fiber Vinyl Film
Outer Frame:	Stainless Steel
Switch Rating:	20A @ DC 12V
Panel Rating:	Max Amp 20A
Panel Depth:	105mm
Dimensions:	64mm x 169mm
Cut-Out:	32mm x 150mm
IP Rating:	IP66
LED Backlight Colour:	Red (530694) / Blue (530696)



### WIRING DIAGRAM



### MOUNTING TEMPLATE

