

relaxn® SOLAR SMART SENSOR LED STREET LIGHT

PART NO.: 709432

USER MANUAL



40W
Watts

4800
Lumens

IP65
Rating

120°
Detection
Angle

The smarter way of lighting

12
MONTHS
WARRANTY

REACH



RoHS
COMPLIANT



Please read and follow all instructions to operate.
Save this manual for futures reference.

SPECIFICATIONS

LED Chip Type:	90 x SMD 2835
Recharge Time:	8-10 Hours of Sunlight
Overall Dimensions (mm):	706.1 x 289.7 x 73.6
Motion Detection Angle:	120°
Motion Detection Distance:	8-12Mtr
Beam Angle:	140 x 70°
Frame Colour:	Black
LED Colour:	Cool White
Working Temperature:	-20°C~60°C
Housing Material:	ABS, PC & Aluminium
Solar Panel Output:	21W Mono-crystalline Silicone
LiFePO4 Battery (Replaceable):	9.6V / 12000mAh

FEATURES

- Impressive lumen output of up to 4800lm.
- 120° wide angle detection system up to 8-12 meters away.
- Adjustable 20° upward / 10° downward angle (straight lamp post mount and wall mount).
- Lasts 4-5 nights from a single 8-10 hour charge.
- Easy to install, no wire, no running power cables, just fit and forget.
- Rated IP65 water and dust protection.
- Mounting brackets included - wall mount or post mount.

ACCESSORIES



Solar Light



Remote Control



User Manual



Wrench



U-Shaped Brackets

WORKING MODES

Lamp Button
On/Off



Button Control:

Please press the button on the lamp to select working modes.
Press 1st time for Mode A;
Press 2nd time for Mode B;
Press 3rd time for off

Remote Control:

Please press the button on the lamp firstly to activate the lamp, then use remote control to adjust demanded working mode.

Mode A - Constant Lighting Mode



Press button on the lamp 1st time or on the remote control, the lamp will automatically turn on at night and keep 60% brightness constantly for 4 hours (induction is invalid). Then it turns to Sensor Mode.

Mode B - Sensor Mode



Press button on the lamp 2nd time or on the remote control, the lamp will automatically turn on 100% full brightness when the sensor has detected motion in the 8-12 meter radius and then turns to 30% brightness for 20 seconds after motion.

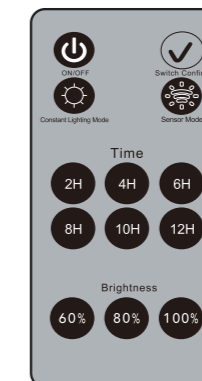
Reminder

1. Above working modes are factory default settings, user can re-set it to press the button on the lamp 1st time for mode B and press 2nd time for

mode A, meanwhile also can select different working time or brightness by remote control, after which it will automatically become the latest default working mode.

2. Mode A and Mode B can't be set to the Constant Lighting Mode at the same time, nor can they be set to the Sensor Mode at the same time.
3. The lamp has a memory function. After the lamp restarted, it will continue to work in the latest default working mode.

DIY Working Time / Brightness by Remote Control



Remote Control Distance: 12Mtr

Mode A - Constant Lighting Mode:

Time and brightness are both adjustable.

For Example:

1. Press button "Constant Lighting Mode";
2. Press button "Time 2H"
3. Press button "Brightness 60%"

The lamp will flash one time after pressing each button above, which indicates it's set successfully as below: Lamp automatically turns on at night and keep 60% brightness for 2hrs, then it turns to Sensor Mode.

Mode B - Sensor Mode

Only brightness (when activated by induction) is adjustable.

For Example:

1. Press button "Sensor Mode";
2. Press button "Brightness 60%"

The lamp will flash one time after pressing each button above, which indicates it's set successfully as below: Lamp automatically turns on with 60% brightness when the sensor has detected motion in the 8-12 meter radius and then turns to weak brightness (30% of 60% brightness) for 20 seconds after motion.

NOTICE

1. The lamp button is a power-off switch, the lamp can get solar charged in any mode.
2. This is a solar powered lamp, please install it in a location where can get enough sunshine.
3. Please note the lighting time depends on the sunshine duration & weather.
4. Built-in intelligent IC is with over-charge, over-discharge and over-voltage protection.
5. The lamp gets solar charged in the daytime, and lights up automatically at dusk.
6. The lamp is equipped with an internal battery pack, which is replaceable. If any need, please contact the seller for the correct new battery pack.
7. Non-professionals please do not disassemble the lamp.
8. Please do not dispose of the battery with household garbage to avoid explosion.

WARRANTY

Sam Allen Wholesale warrants this product against defects in manufacture and workmanship for a period of 1 year from the date of purchase. This warranty is only valid for products installed and operated within the guidelines specified by Sam Allen Wholesale.

Warranty does not include damage or loss arising from incorrect installation, operation or maintenance of this product, damage caused through modification, incorrect installation, service by unqualified or unauthorised personnel or lack of regular maintenance and cleaning. Proof of installation by qualified personnel may be required, eg. Electrical Safety Certificate. Proof of purchase must be supplied with all warranty claims.

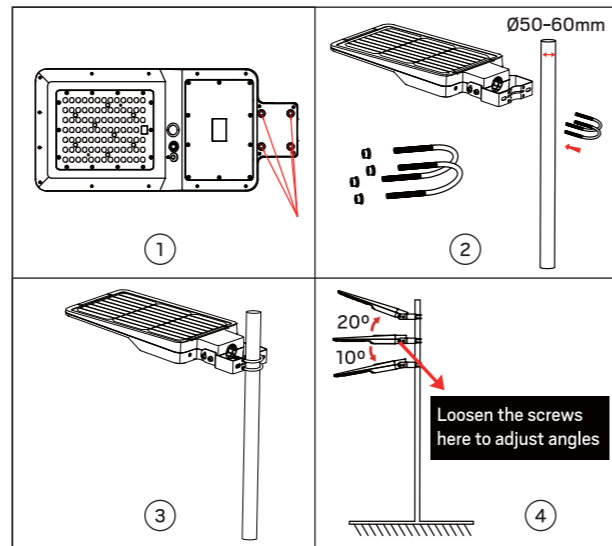
This warranty is provided in addition to any other rights and remedies of the customer under any law. In applications not intended for household, personal or domestic use, liability is limited to replacement or reimbursement of the product only. Sam Allen Wholesale does not warrant the costs of removal or re-installation of this product or associated components.

Your goods come with guarantees that cannot be excluded under the Australian Consumer Law. You are entitled to a replacement or refund for a major failure and compensation for any other reasonably foreseeable loss or damage. You are also entitled to have the goods repaired or replaced if goods fail to be of acceptable quality and the failure does not amount to a major failure.

Any claim under this warranty must be made within 1 year of the date of purchase of the product. To make a claim under the warranty; at your own expense take the product (with proof of purchase - receipt or similar) to the store where you purchased the product or contact Sam Allen Wholesale.

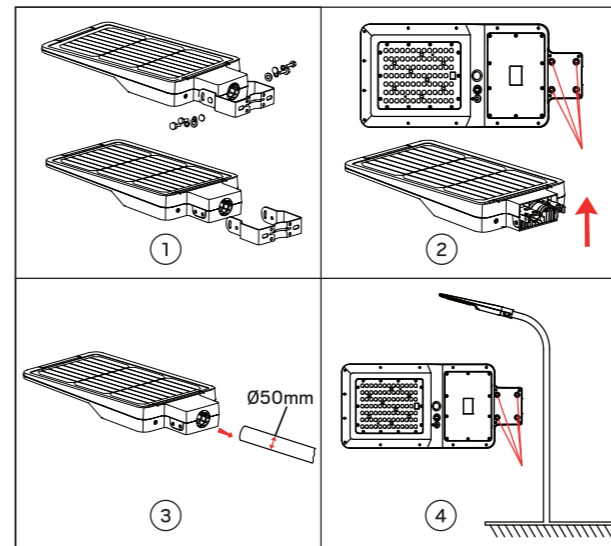
INSTALLATIONS

Installation A: Straight Pole Mount (Default installation method, accessories included)



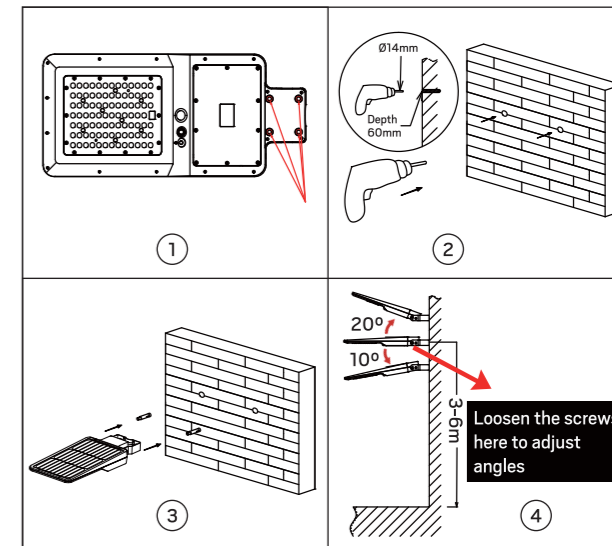
1. Before installation, make sure the 4 bottom screws are tightened.
2. Remove the small U-shaped brackets, then insert them to the lamp bracket across the straight pole.
3. Tighten the screws to fix the lamp onto the pole (applicable to the poles of Ø50-60mm).
4. If need, please loosen the screws at both sides of the lamp to adjust the lamp angle, which is 20° upward and 10° downward adjustable, then tighten the screws of the lamp.

Installation B: Curved Pole Mount (Default installation method, accessories included)



1. Loosen the screws and remove the big U-shaped bracket.
2. Loosen the bottom screws to match the pole.
3. Install the lamp on the pole (applicable to the poles of Ø50mm).
4. Adjust the lamp and balance it, tighten the four screws to lock the lamp.

Installation C: Wall Mount (Optional) (Customers need to prepare 2pcs expansion screws M10 x 60mm)



1. Before installation, make sure the 4 bottom screws are tightened.
2. Drill 2 holes of Ø14mm with a depth of 60mm and holes distance 104mm on the wall.
3. Use 2 expansion screws to fix the lamp on the wall.
4. If need, please loosen the screws at both sides of the lamp to adjust the lamp angle, which is 20° upward and 10° downward adjustable, then tighten the screws of the lamp.